

PSRC Regional Freight Mobility Roundtable



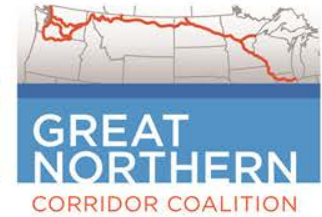
**GREAT
NORTHERN**
CORRIDOR COALITION

4.4.2014



Presented by:

- Colleen Weatherford, BNSF Railway
- Chris Herman, WSDOT



- The Great Northern Corridor is a globally competitive multistate freight corridor consisting of a seamless road and rail network that promotes economic growth for neighboring communities and accommodates the demand for safe, efficient, and environmentally sound transportation services.

Corridor Description:

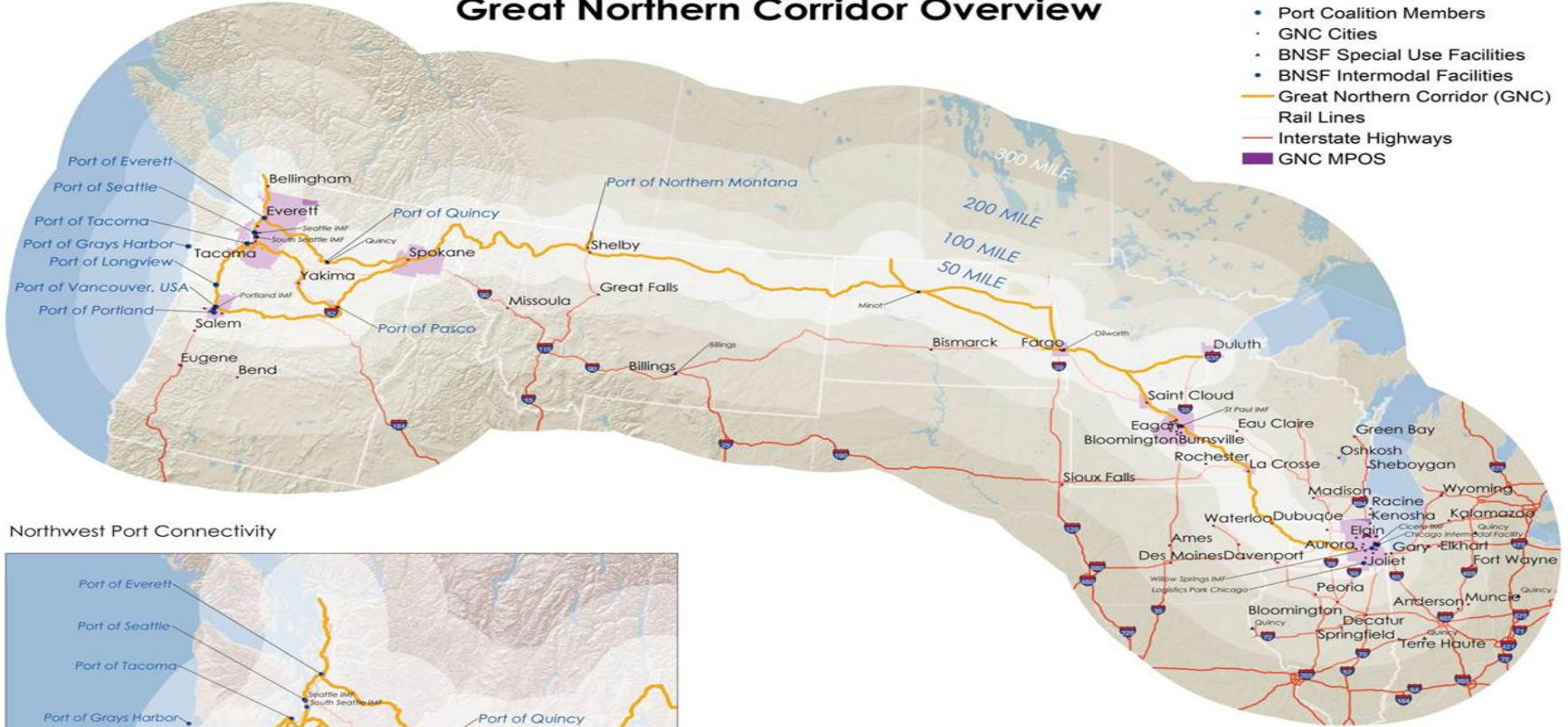


GREAT NORTHERN
CORRIDOR COALITION

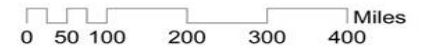
Great Northern Corridor Overview

Legend

- Port Coalition Members
- GNC Cities
- BNSF Special Use Facilities
- BNSF Intermodal Facilities
- Great Northern Corridor (GNC)
- Rail Lines
- Interstate Highways
- GNC MPOS



Northwest Port Connectivity



Corridor Facts:

- Over 3,300 Rail Route Miles (BNSF Railway)
- 2,600 Public Grade Crossings
- Corridor Opportunity Zones of 50, 100 and 200 miles = Multiplier Effect: 4,700 Towns and 382 Counties
 - Used to highlight the broader economic, geographic, and transportation implications of the corridor

Geopolitical:

- 8 States: IL, WI, MN, ND, MT, ID, OR, WA
- 27 Million Americans, 12 Million U.S. Jobs, \$1.4 Trillion in GDP
- 18 MPOs
- 1,000 Municipalities
- 125 Counties
- 432,000 Businesses

- Key Industries / Products:
 - Agriculture Products
 - Forest Products
 - Consumer Products
 - Energy Products
 - Industrial Products
 - Iron and Steel
 - Minerals
 - Automobiles and Machinery
 - Aerospace Products

Surface Infrastructure & Connectivity:

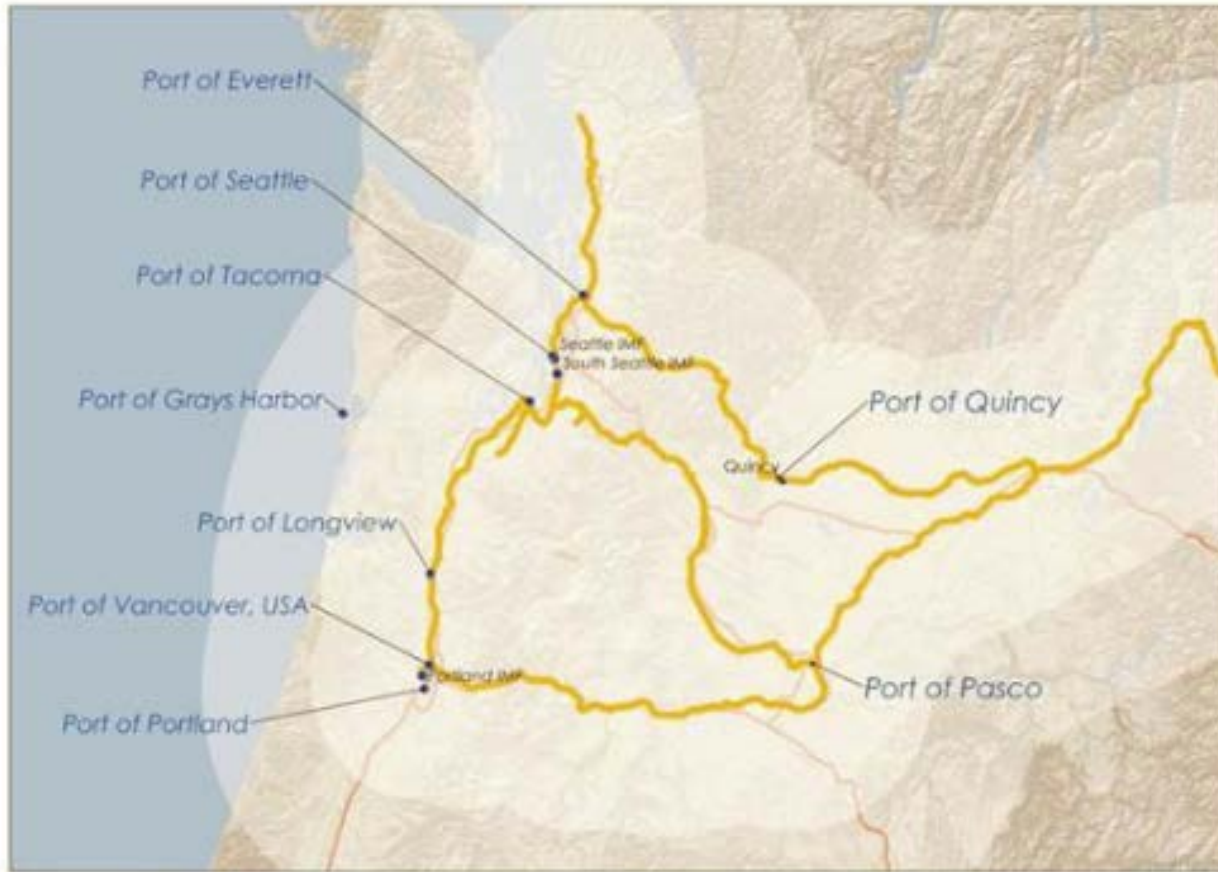
State	Highways	Class 1, 2 and Short Line Railways
ID	I-90, US-2, US-95	UP, MRL, Connecting industry tracks
MN	I-90, I-94, I-35, US-2, US-10, US-12, US-14, US-59, US-69, US-71, US-75, MN-169, MN-212	CN, CPR, NLR, MNN, MNNR, UP, Connecting industry tracks
MT	I-90, I-15, US-2	MMR, YVR, MRL, CMR, Connecting industry tracks
ND	I-29, I-94, US-2, US-52, US-83, US-85	CPR, NPR, DMVW, Connecting industry tracks
OR	I-5, I-84, US-20, US-26, US-30, US-95, US-97, US-101, US-199, US-395	UP, PNWR, MH, POTB, Connecting port lines and industry tracks
WA	I-5, I-82, I-90, US-2, US-12, US-97, US-101, US-195, US-395, SR-8	PSAP, LWR, CBRC, UP, WSDOT, KFR, Connecting port lines and industry tracks
WI	I-90, I-94, US-43	CN, CPR, Connecting industry tracks

Gateways, Border Crossings and Inland Ports:

1. Blaine, WA
2. Everett, WA
3. Seattle, WA
4. Tacoma, WA
5. Olympia, WA
6. Grays Harbor, WA
7. Longview, WA
8. Kalama, WA
9. Vancouver USA, WA
10. Portland, OR
11. Quincy, WA
12. Pasco, WA
13. Sweetgrass, MT
14. Port of Northern Montana -
Shelby, MT
15. North Dakota Port Services -
Minot, ND
16. North Gate, ND
17. Minneapolis, MN
18. Duluth/Superior, MN
19. Chicago, IL

Washington and Pacific Northwest:

Northwest Port Connectivity



- Combined, the Ports of the PNW make up the second largest US Gateway
- Trade that moves through PNW Gateways benefits the entire country
- 13% (by value) of U.S. trade with Asia, moved by water via the PNW Gateways
- 40% of all jobs in Washington State are dependent upon trade
- Trade prosperity in the PNW is directly linked to the level of rail and roadway infrastructure serving the region

- GNCC States move 42% of all waterborne exports through the PNW Gateways
- GNCC States move 61% of waterborne exports with Asia through the PNW Gateways

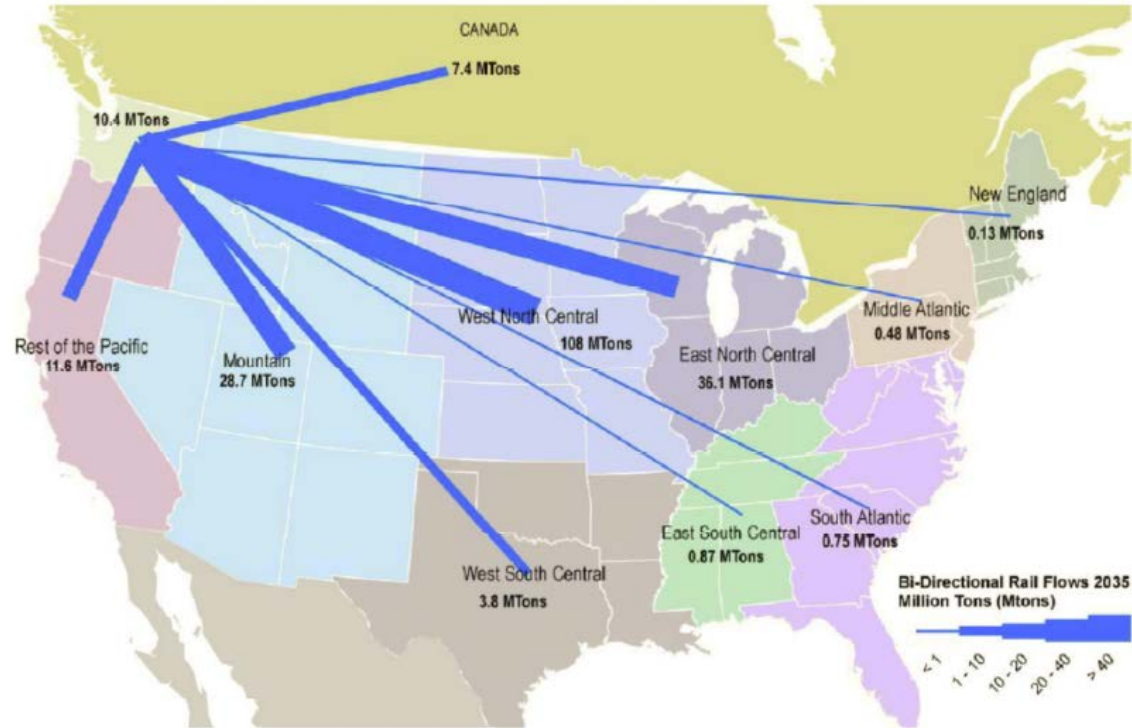
**Table 4 – Northern Tier States Share of Exports
(based on 2013 trade value)**

	All Trade	Waterborne
All Countries	33.0%	42.0%
Asia	50.1%	61.0%
Northeast Asia	51.9%	61.7%

Source: WISERTrade data

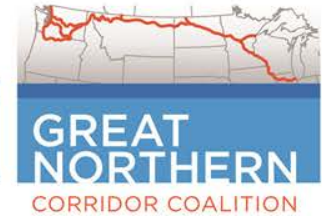
A Vision for the Future.....

Figure ES.1 Annual Bidirectional Rail Volumes to U.S. Regions, 2035



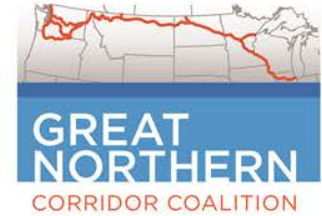
Source: Cambridge Systematics' 2035 Freight Rail Flows Forecasting.

Corridor Coalition Background:

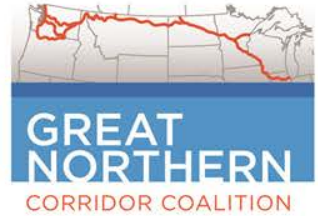


- MCOM 1 Grant Award \$299,910
- MCOM 2 Grant Award \$419,200
 - 22.5% Public/Private Partnership Match
- Participating Members:
 1. Idaho DOT
 2. MN DOT
 3. MT DOT
 4. ND DOT
 5. OR DOT
 6. WA DOT
 7. WI DOT
 8. FHWA
 9. BNSF
 10. Port of Everett
 11. Port of Seattle
 12. Port of Tacoma
 13. Port of Grays Harbor
 14. Port of Longview
 15. Port of Vancouver USA
 16. Port of Portland, OR
 17. Port of Pasco
 18. Port of Quincy
 19. WA Public Ports Association
 20. Port of Northern Montana

Corridor Coalition Goals:

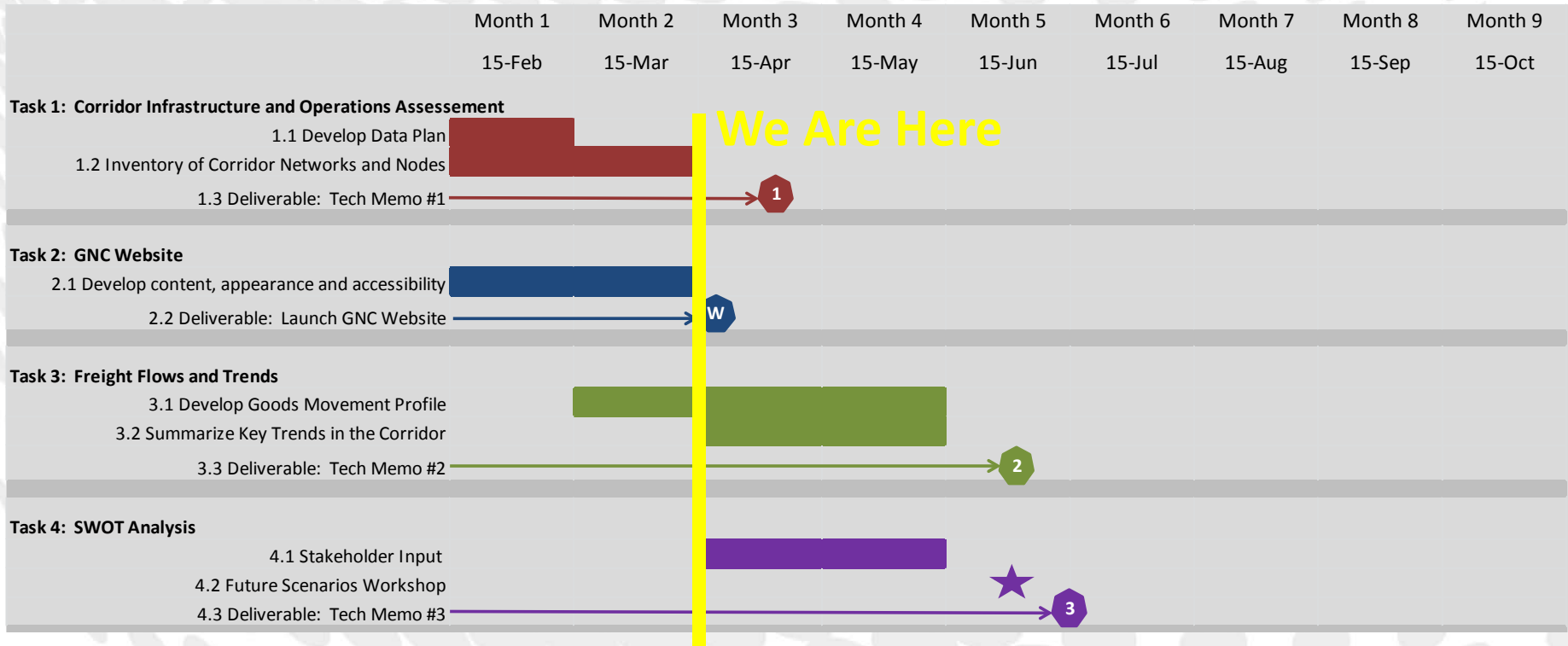
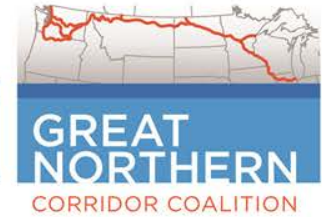


- To position the Great Northern Corridor as a national leader and model of collaboration and coordination among transportation alliances in eight states and bordering Canadian provinces;
- To sustain and enhance the economic vitality and global competitiveness of the Region;
- To support efficiencies that reduce the transportation carbon footprint;
- To support a sustainable and secure energy future;
- To support freight compatible land-use development along the corridor;
- To invest in a 21st Century transportation system that utilizes diverse revenue and financing mechanisms;
- To support a seamless, efficient, and integrated freight system;
- To encourage optimal modal freight movement based on efficiency, demand, capacity, and environmental sustainability;
- To implement advanced operations and technology solutions to improve freight mobility.

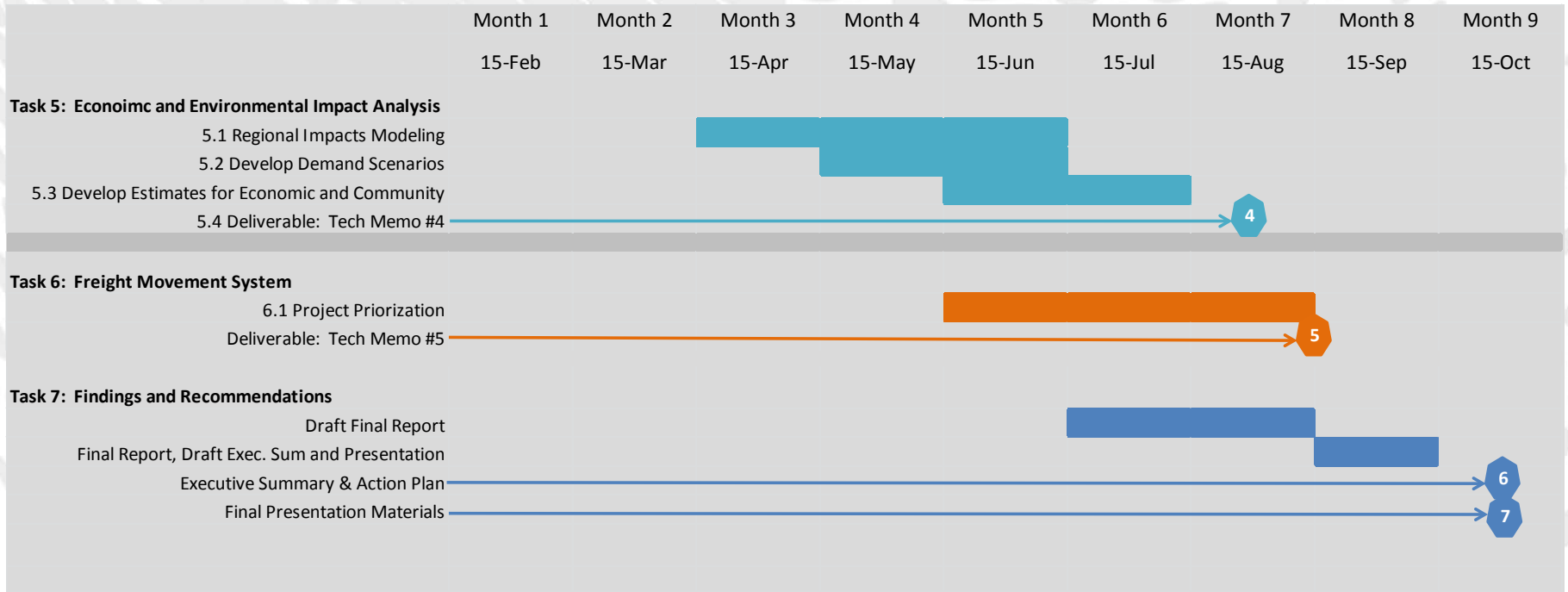
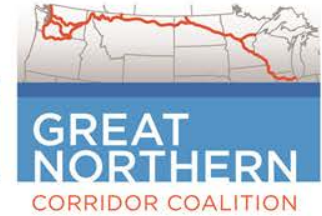


- Corridor Coalition Website
- Communication and collaboration among members
- Inventory and assess corridor infrastructure
- Analyze freight flows and industry trends
- Identify and develop potential improvement projects or initiatives

MCOM 1 Project Schedule -1:



MCOM 1 Project Schedule -2:



- 2013 Washington State Rail Plan recommends participation in multistate coalitions to support freight strategies
- The GNCC will help to create a shared vision for a “Corridor of National Significance”
- The GNCC will help create more robust trade alliances and business opportunities across the corridor enhancing our global competitiveness
- The GNCC highlights the important role our PNW Gateway Ports plays for the country and our state
- Trade prosperity in the PNW is directly linked to the level of rail and roadway infrastructure serving the region and Washington’s manufactures and farmers who rely on the freight system to transport Made in Washington products to local customers, large U.S. Markets on the east coast and to international destinations
- Value of the partnerships created by the Great Northern Corridor Coalition (GNCC) effort will strengthen the working relationships between our federal, state and local jurisdictions and delegations

Thank You!

Discussion