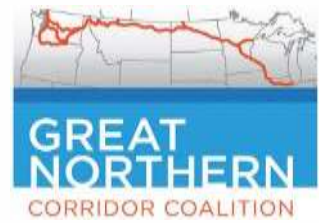


Great Northern Corridor

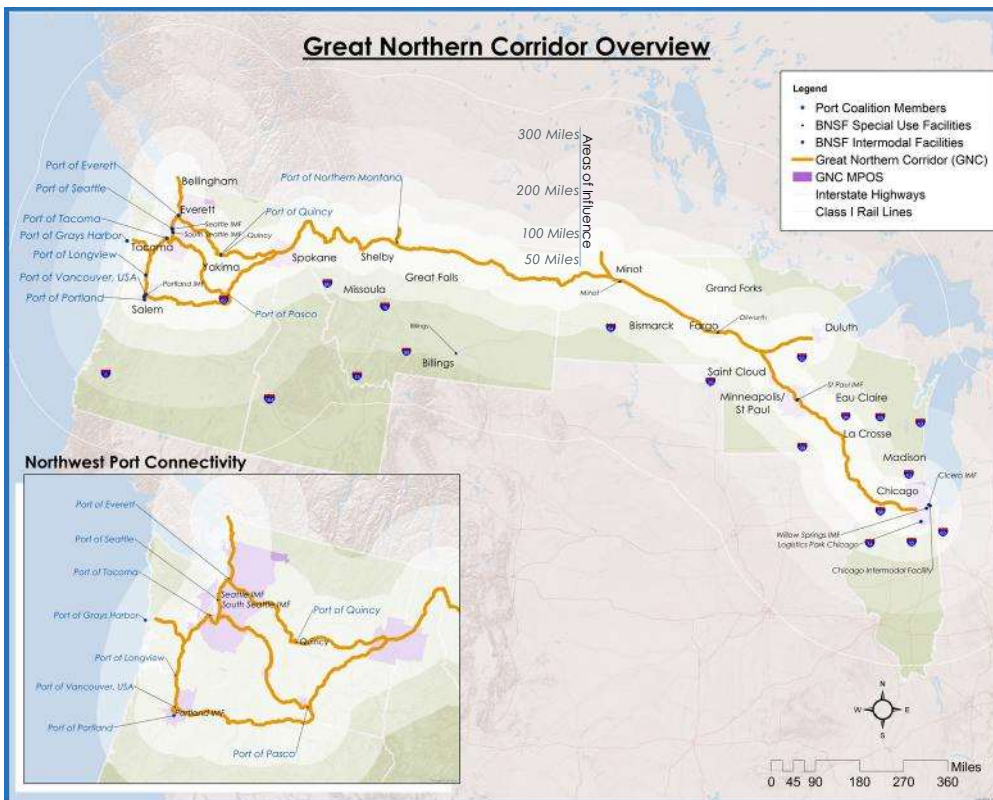
Multi-State Planning and Development Study



Vision

“ The Great Northern Corridor is a globally competitive multistate freight corridor consisting of a seamless road and rail network that promotes economic growth for neighboring communities and accommodates the demand for safe, efficient, and environmentally sound transportation services.”

- A strategic link that serves 8 States and 3 Canadian Provinces
- Serves U.S. areas with over 35¹ million people and nearly 12.5 million U.S. jobs² - \$1.71T GDP³
- Provides access to the nation's vast rail network, vital multimodal connections and the global marketplace
- Over 222 million tons of freight moved in 2013
- Includes over 3,331 rail route miles



First Step

The first step is underway, conducting a Strength, Weaknesses, Opportunities and Threats analysis to identify opportunities to improve the technology, operations and infrastructure along the corridor. The study will be conducted by Olsson Associates, Parsons Brinckerhoff and The Beckett Group. The SWOT analysis is expected to be completed by fall 2014 with analysis of identified projects and initiatives beginning immediately after the SWOT.

Funding

The study is being funded by two Federal Highway Administration Multimodal Corridor. Operations and Management (MCOM) grants and contributions from the coalition partners. To date over \$750,000 has been allocated.

Next Step

The next step to strengthening the corridor will be using the results from the SWOT analysis to develop viable projects that will improve multimodal transportation system management and operations

- 1- U.S. Census Bureau (2013)
- 2- U.S. Bureau of Labor Statistics (2013)
- 3- U.S. Bureau of Economic Analysis (2012)

Goals

- To position the Great Northern Corridor as a national leader and model of collaboration and coordination among transportation alliances in eight states and bordering Canadian provinces;
- To sustain and enhance the economic vitality and global competitiveness of the Region;
- To support efficiencies that reduce the transportation carbon footprint;
- To support a sustainable and secure energy future;
- To support freight compatible land use development along the corridor;
- To invest in a 21st Century transportation system that utilizes diverse revenue and financing mechanisms;
- To support a seamless, efficient, and integrated freight system;
- To encourage optimal modal freight movement based on efficiency, demand, capacity, and environmental sustainability;
- To implement advanced operations and technology solutions to improve freight mobility.

Objectives

- Assess transportation infrastructure to determine critical components along the Corridor;
- Identify relevant freight performance measures for the Corridor;
- Based on current and projected demand, identify corridor bottlenecks/chokepoints through 2035;
- Identify potential innovative operations and technology solutions for corridor improvements;
- Identify scope and sequence of current and potential corridor improvements to develop and implement projects;
- Estimate and refine project costs based on actual stakeholder data;
- Identify and secure potential diverse funding and financing alternatives;
- Establish the Coalition as a “go-to” resource;
- Enhance and expand communications and outreach with existing and potential member organizations;
- Report initiatives, outcomes and successes to a broader constituency; and
- Assess broad potential environmental impacts of proposed corridor improvement activities, consistent with state and federal environmental requirements.

Coalition Partners Include

- Washington State Department of Transportation
- Oregon Department of Transportation
- Idaho Transportation Department
- Montana Department of Transportation
- North Dakota Department of Transportation
- Minnesota Department of Transportation
- Wisconsin Department of Transportation
- BNSF Railway
- Washington Public Ports Association
- Port of Seattle
- Port of Tacoma
- Port of Everett
- Port of Quincy
- Port of Northern Montana
- Port of Pasco
- Port of Grays Harbor
- Port of Vancouver, USA
- Port of Portland
- Port of Longview